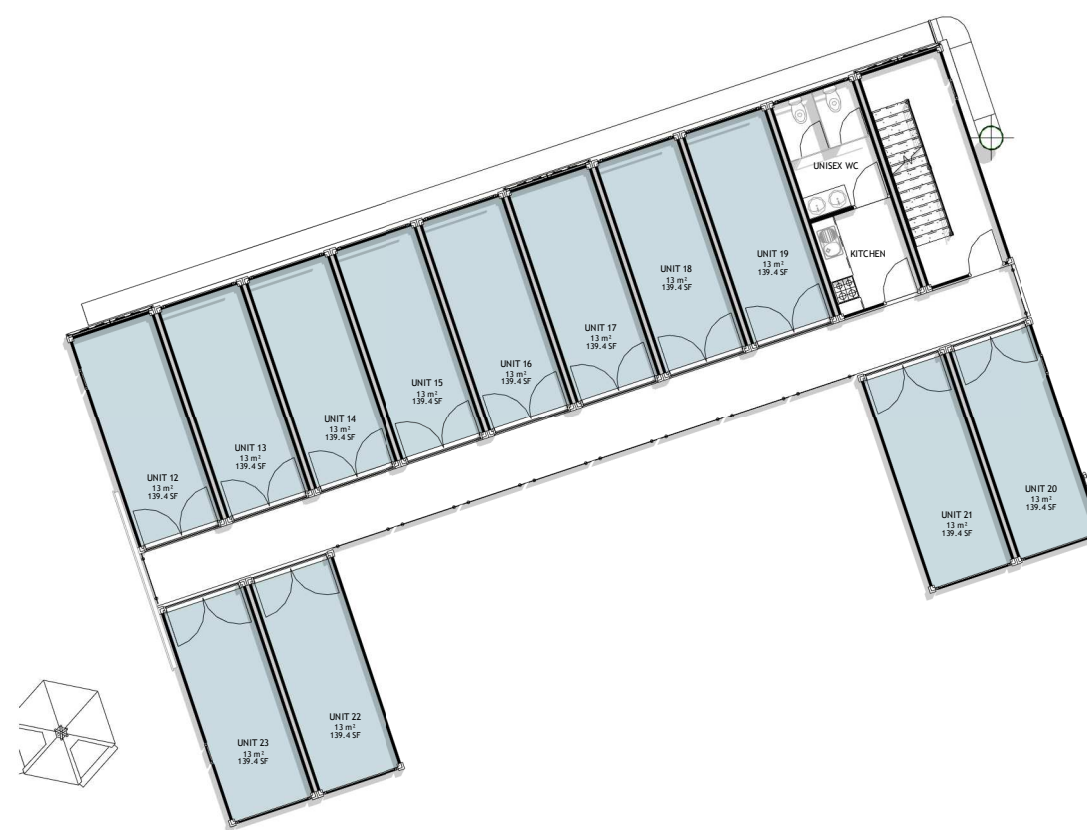
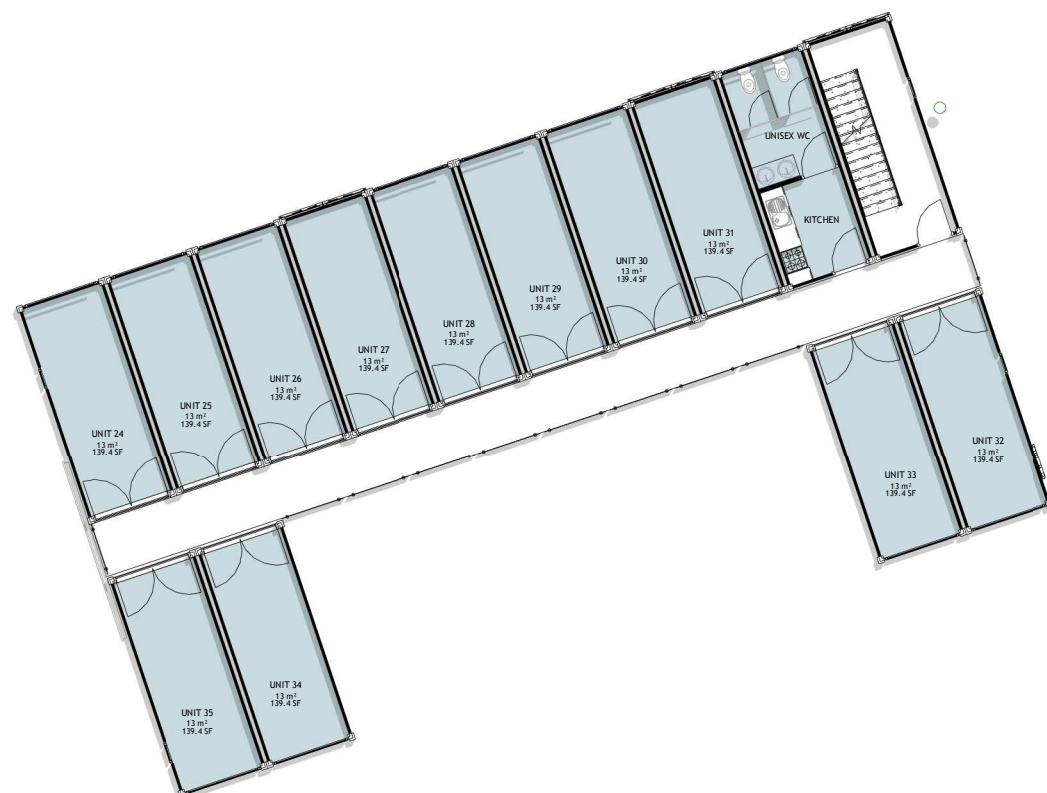


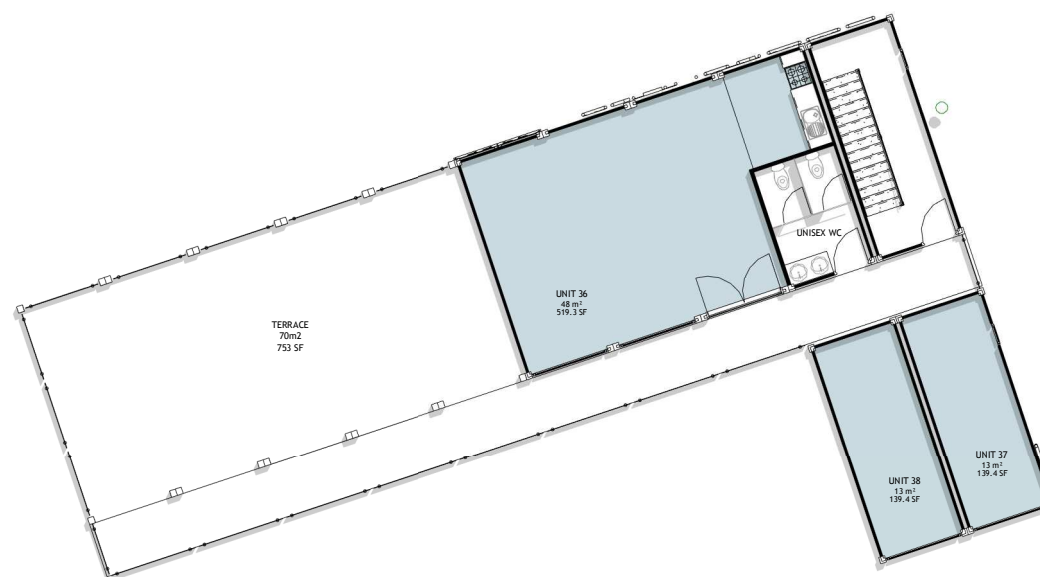
01 CONTAINER VILLAGE - GF
1 : 100



02 CONTAINER VILLAGE - FF
1 : 100



03 CONTAINER VILLAGE - SF
1 : 100



04 CONTAINER VILLAGE - TF
1 : 100

Copyright © 2018

Notes:

Do not scale this drawing. Check all dimensions on site. Any discrepancies to be reported back to the Architect for clarity.

Rev Revision By Date

Client:

DS PROPERTIES (GOODS SHED) LTD
DS HOLDINGS (PENARTH) LTD

Project:

GOODSHEDS, HOOD ROAD, BARRY

Job Number: L818

Date: 12.10.18

Drawn by: PC

Dwg No: A134

PROPOSED CONTAINER VILLAGE
FLOOR PLANS

Revision:

Scale: 1 : 100 @ A1

Drawing Status:

PLANNING



TONY KING
ARCHITECTS LTD

97a Glebe Street, Penarth
Vale of Glamorgan CF64 1EE

T: 02920 306400
www.tonykingarchitects.co.uk